

GW304-CFK Carbon Fibre-Reinforced Plastics Insert

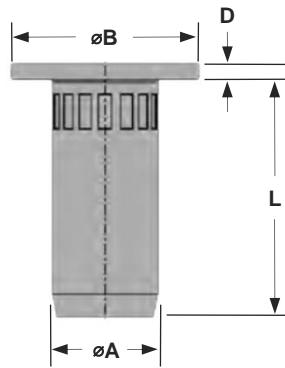
Stainless steel 304 · Large flange · Open end
M6

Features

- High strength threaded inserts designed for carbon fibre-reinforced plastics (CFRP)
- Precise controlled setting procedure ensures the component is barely subject to bearing stress and contact pressure
- The bulb that forms flat on the component with a larger diameter ensures outstanding mechanical properties
- Component damage such as crushing, cracking, delamination are avoided
- Stainless steel 316 option available on request

Material

- Stainless steel 304



Before Placement



After Placement

Part No.	Thread Size	Grip Range		Hole Size	øA	øB	D	L
		min.	max.					
GW304-CFKM6-0545	M6	0.5	4.5	9.1	9.0	12.0	1.5	20.0
GW304-CFKM6-4565		4.5	6.5					

Thread Size	Tightening torque	Thread breaking force	Shear strength
	Nm max.	kN	kN
M6	27.0	> 25.0	5.75



Can't find what you are looking for?

We can provide unique and customized solutions.
Contact your nearest [Gripwell](#) team for assistance!